

## Tulse Hill, Brixton, SW2

2 bedroom flat - purpose built for sale

£645,000

Leasehold

### Property Details

An exceptional two bedroom apartment set back from the street with a private terrace. This impressive new home forms part of a gated development designed with attention to detail. This sizeable third floor apartment has a bright and airy feel, with additional privacy due to the elevated position. The expansive open-plan reception is a fantastic entertaining space with high ceilings enhancing the cavernous feel. Down lighting and timber floors in warming shades create a welcoming ambience. A sleek kitchen integrates appliances and generous storage, topped with wrap-around work surfaces. The sociable peninsular enhances the ergonomics whilst providing a breakfast bar for a more casual dining option. A large pane glass door leads out to the terrace, South-facing this low-maintenance suntrap is sheltered by glass balustrades. Peacefully nestled away from the exciting buzz of the area, both bedrooms are comfortable doubles of similar proportions, with a calming yet airy ambience and plush carpets. The stunning bathroom has a bathtub with overhead shower set against beautiful marbled tiling. The home benefits from two hallway cupboards, video entry phone, high energy efficiency and ten-year build warranty.

### Features

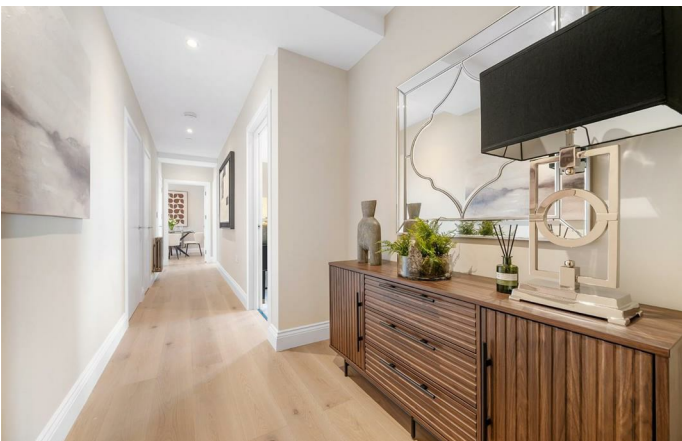
- Two double bedrooms
- Private South-facing terrace
- Gated new build apartment
- Over 860 square feet
- Beautifully finished throughout
- Supermarket, restaurants and cafes on the doorstep
- Central Brixton and Herne Hill both a ten-minute stroll
- Brockwell Park a four-minute walk
- Chain-free
- 10 year build warranty

Council tax band C

EPC rating C (80)



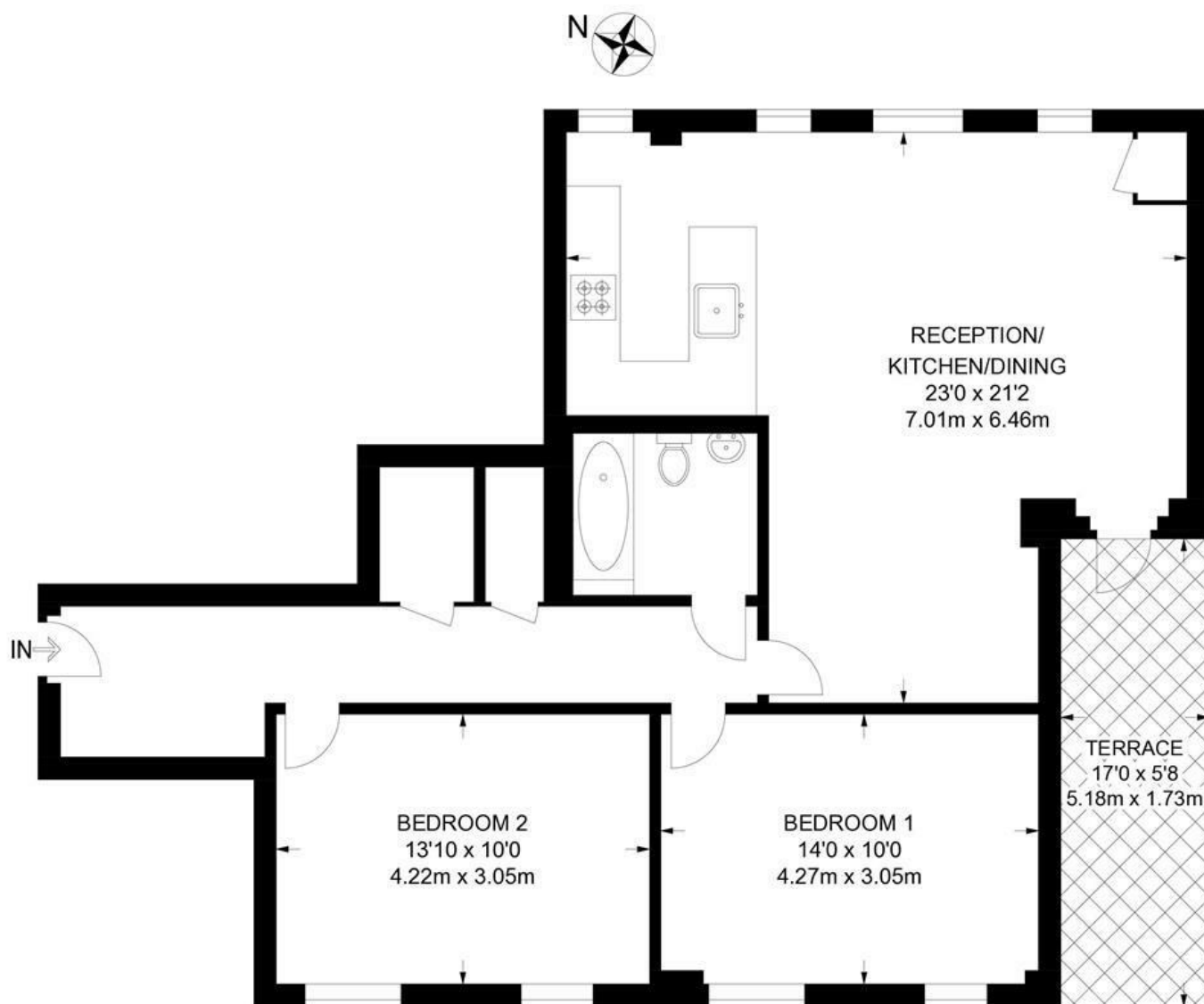




Tulse Hill, Brixton, SW2

**Tulse Hill, SW2**  
**2 Bedroom Flat**

APPROXIMATE GROSS INTERNAL AREA: **862 SQ FT / 80.1 SQ M**



**THIRD FLOOR**



While we try our very best, floor plans are produced as a guide only and we take no responsibility for the precise accuracy with which any property is represented.



Tulse Hill, Brixton, SW2

